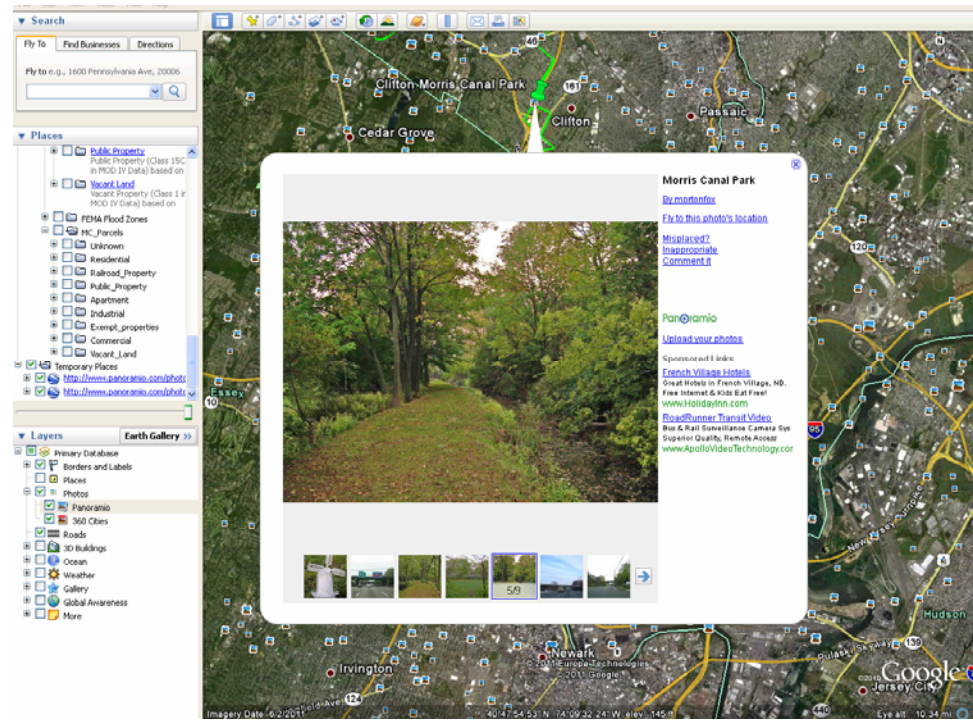
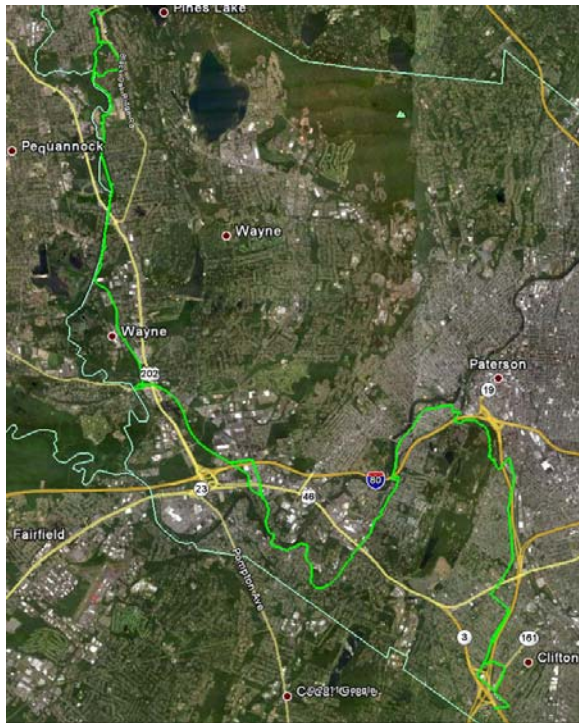


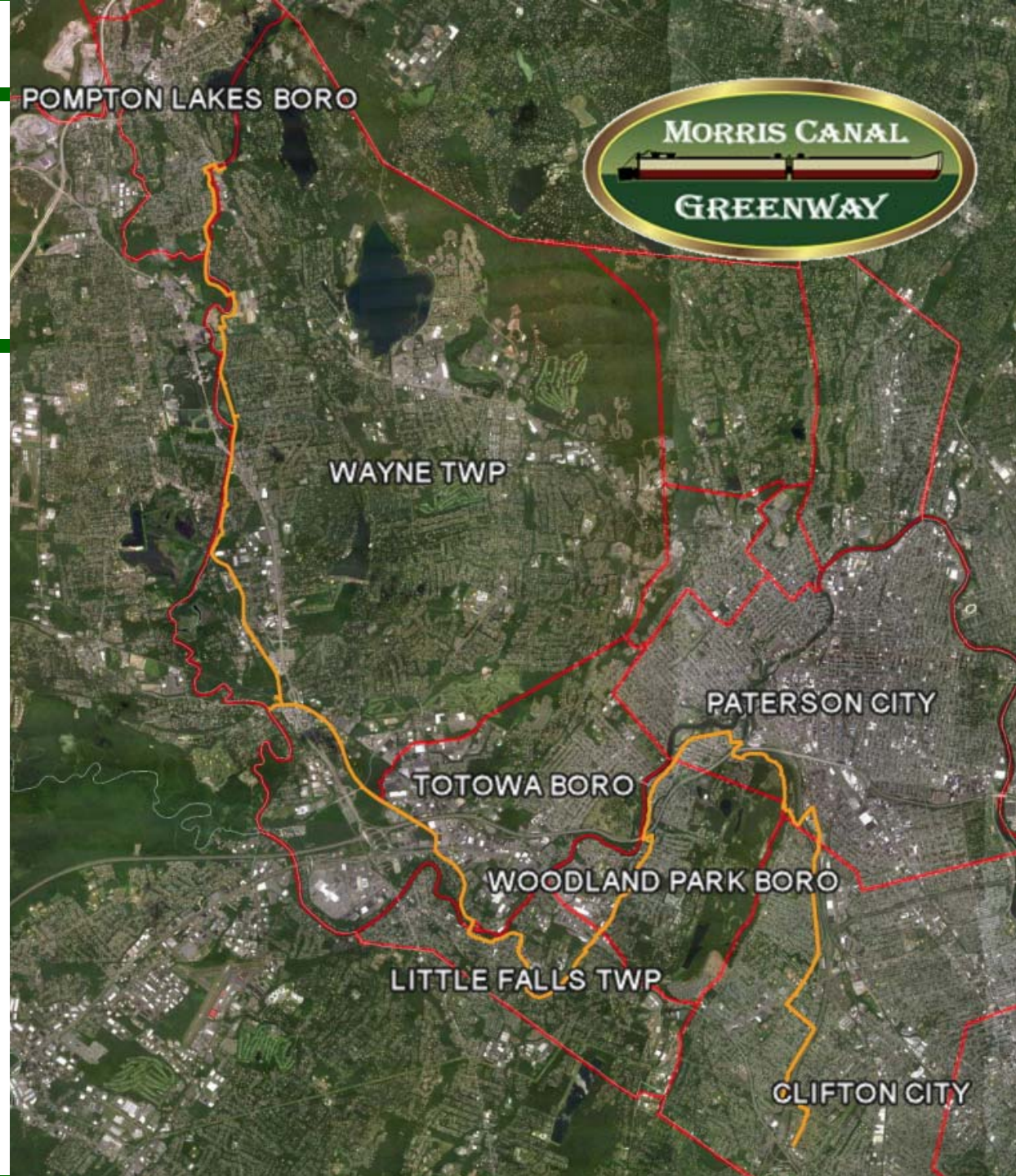
Google Earth as a Planning Tool

Case Study: Morris Canal Greenway



Project Overview

- ◆ ANJEC Funding
- ◆ Professional Services
- ◆ Feasibility Study
- ◆ Objectives
- ◆ Products



Community Involvement

◆ Project Team

- Monthly meetings
 - Pushpins
- Site Visits
 - Apps: My Tracks
- Sharing .kml files

◆ Outreach

- Newsletters
- Website & Facebook

◆ Engagement

- Public Meetings
- Local Officials

Collaborative Approach

- ◆ Leveraging Client, State, Stakeholder Resources
 - County GIS capabilities; State GIS Resources
- ◆ Technical Support
 - Software Platforms; Scalability; Field Integration
- ◆ Objectives – Results

Utilizing Google Earth

- ◆ Prioritize Improvements – Near/Long Term
- ◆ Funding Applications
- ◆ Civic Engagement – Living Project
- ◆ Coordination with Other Initiatives
 - Watershed Management; Flood Management; Emergency Access (bridges); Riverwalks or aquatic parks (trails); Safe Routes to Schools; Downtown Redevelopment

Google Earth Mapping Basics

Inputs:

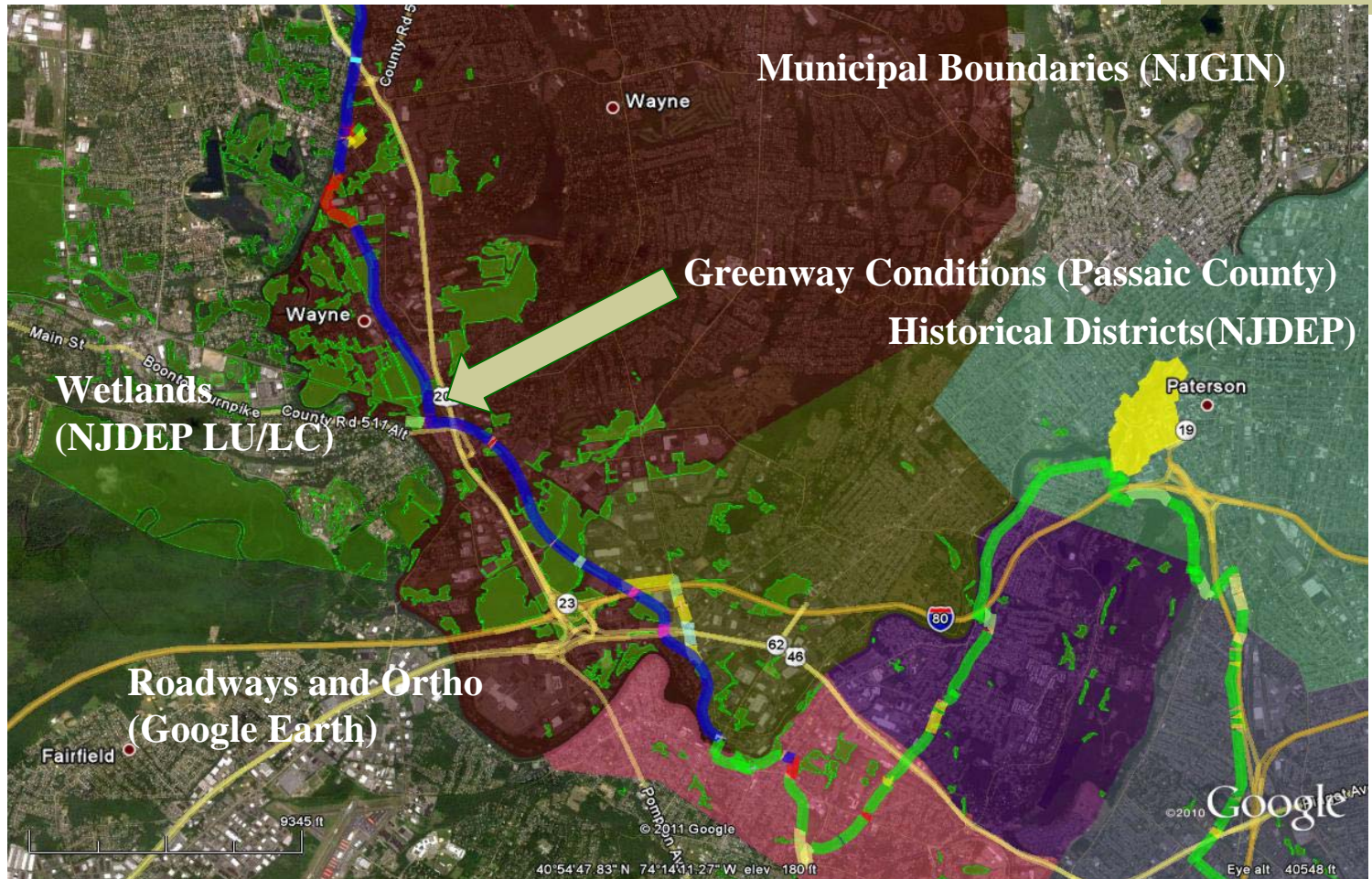
◆ Primary

- Directly Input into Google Earth
- Handheld Devices, Smartphone Apps, Cameras
- Picasa for Photos

◆ Secondary

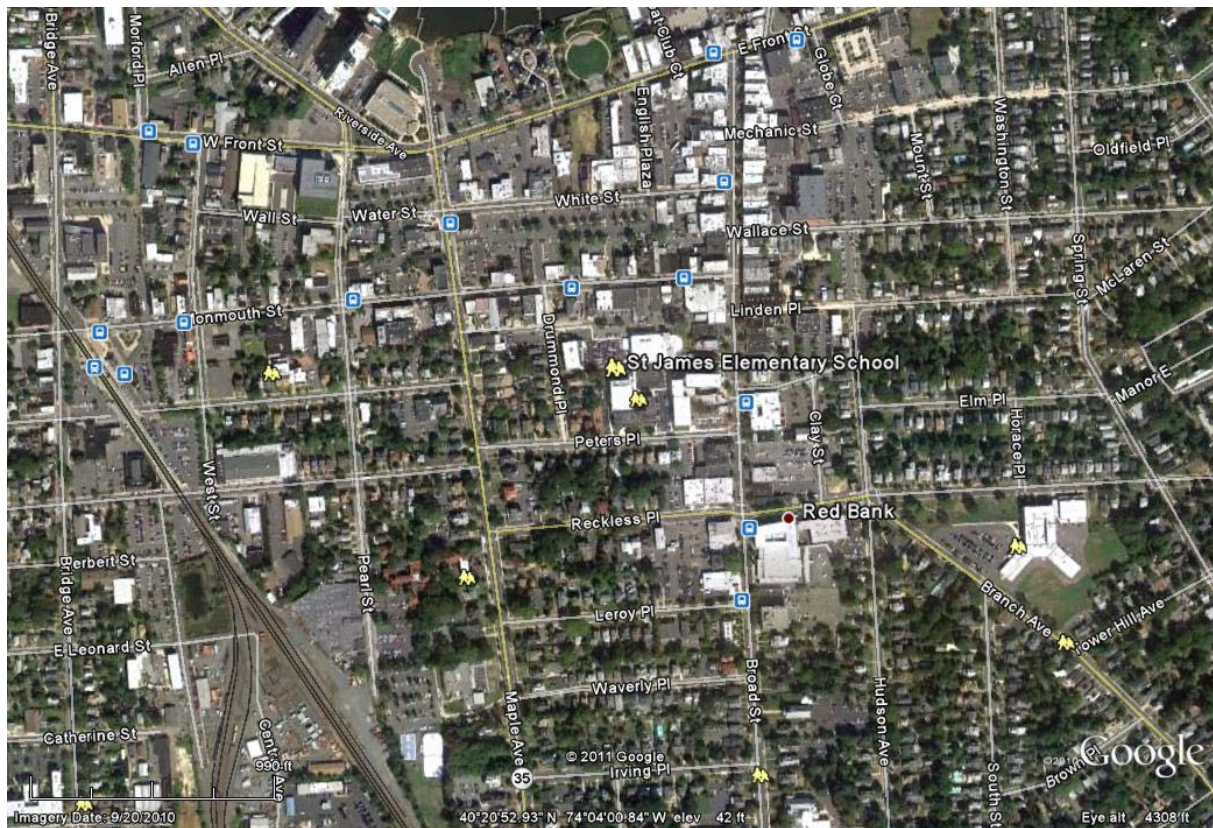
- ESRI GIS Shapefiles
- Photo Overlays
- Existing Google Earth Layers
- Google Earth Pro
- ESRI add-ons (Xtools)
- Freeware Typeconvert

Google Earth Mapping Basics



Google Earth Features

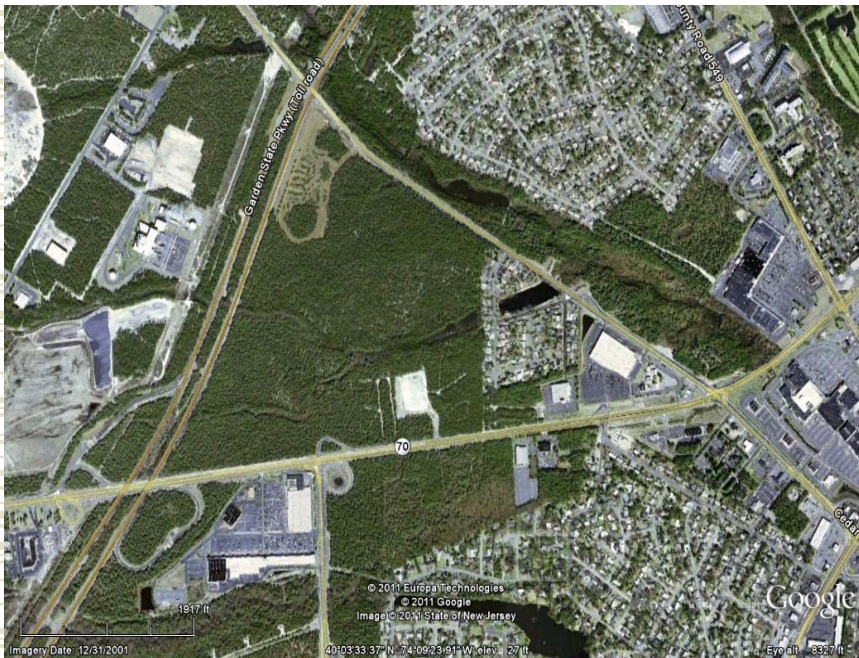
- ◆ Ready Made Features (Bus Stops, Roads)



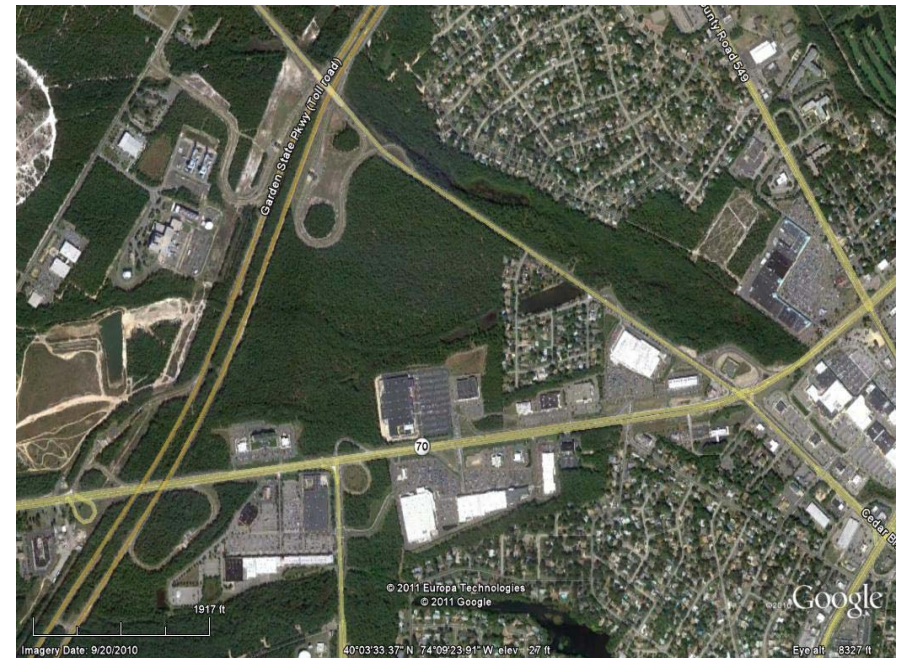
Google Earth Features

- ◆ Historical and Up to Date Orthoimagery

2002



2010



Google Earth Features

- ◆ Road Views



Benefits of Google Earth

- ◆ Simplifies GIS data by:
 - Allowing you to create your own layers
 - Combine existing layers
 - Reference up to date or historical aerial photos
 - Uses a Windows Explorer functionality
 - Ability to share it all via e-mail or save maps
 - Fast and efficient presentation

Google Earth Virtual Tour

- ◆ [ANJEC_Conference_Virtual_Workshop.kmz](#)
- ◆ Questions
- ◆ Contact us:

Jennifer Gonzalez
Environmental Planner
Passaic County Planning Dept.
973-569-4045
jenniferg@passaiccountynj.org

Niek Veraart, AICP, ASLA
Vice President
The Louis Berger Group, Inc.
212-612-7921
nveraart@louisberger.com

Matt Jacobs
Senior Economist
The Louis Berger Group, Inc.
212-612-7939
mjacobs@louisberger.com



www.facebook.com/MorrisCanalGreenway



<http://www.passaiccountynj.org/morris-canal-greenway-study>



www.louisberger.com